

Fort Mott State Park Pennsville, New Jersey



Fort Mott State Park

Pennsville, New Jersey

Fort Mott was part of a three-fort defense system designed for the Delaware River during the post Civil War modernization period. The other two forts in the system were Fort Delaware on Pea Patch Island and Fort DuPont in Delaware City, Delaware. Original plans for Fort Mott specified eleven gun emplacements with twenty guns and a mortar battery with six emplacements. Construction was started in 1872; however, only two of the gun emplacements and two magazines in the mortar battery were completed by 1876 when all work stopped.

Fort Mott, along with [Fort Delaware](#) and [Fort DuPont](#), became obsolete as the principal defensive installation on the Delaware River with the construction of Fort Saulsbury, near Milford, Delaware, shortly after World War I.

Troops were regularly stationed at Fort Mott from 1897 to 1922. The federal government maintained a caretaking detachment at the fort from 1922 to 1943. New Jersey acquired the military reservation as a historic site and State park in 1947. The park was opened to the public on June 24, 1951.

454 Fort Mott Road
Pennsville, NJ 08070
(856) 935-3218

Open daily 8.m. to 4 p.m.

Office Hours: Monday-Friday 9 a.m. to 4 p.m.

<http://www.state.nj.us/dep/parksandforests/parks/fortmott.html>











More than just gun batteries

As the fortification expanded in size, numerous structures were built or modified, and others were removed from the reservation.



Guard House:
Currently houses the Fort Mott State Park Office (No. 27)

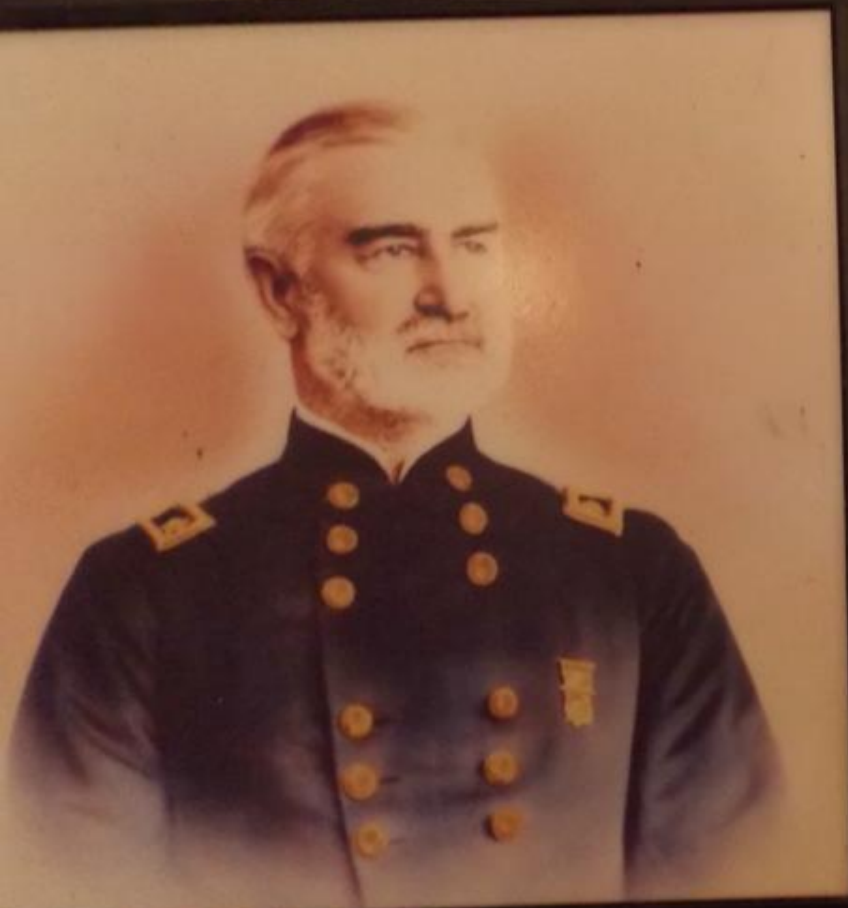


Hospital and corps. (No. 37)



Parade Ground with
Company Barracks in background. (No. 34)

LEGEND	
1	Field Office
2	Office Building
3	Office Building
4	Office Building
5	Office Building
6	Office Building
7	Office Building
8	Office Building
9	Office Building
10	Office Building
11	Office Building
12	Office Building
13	Office Building
14	Office Building
15	Office Building
16	Office Building
17	Office Building
18	Office Building
19	Office Building
20	Office Building
21	Office Building
22	Office Building
23	Office Building
24	Office Building
25	Office Building
26	Office Building
27	Office Building
28	Office Building
29	Office Building
30	Office Building
31	Office Building
32	Office Building
33	Office Building
34	Office Building
35	Office Building
36	Office Building
37	Office Building
38	Office Building
39	Office Building
40	Office Building
41	Office Building
42	Office Building
43	Office Building
44	Office Building
45	Office Building
46	Office Building
47	Office Building
48	Office Building
49	Office Building
50	Office Building



This fortification was named in honor of
Major General Gershom Mott,
a decorated Mexican War and Civil War Veteran
and native of New Jersey.

GERSHOM MOTT

(April 7, 1822 - November 29, 1884)

Lieutenant Colonel 5th Regiment, New Jersey Volunteers, August 23, 1861
Colonel 6th Regiment, New Jersey Volunteers, May 7, 1862
Brigadier General, September 7, 1862
Brevet Major General, August 1, 1864
Major General, May 26, 1865

COMMANDS

3rd Brigade, (2nd New Jersey Brigade), 2nd Division, 3rd Corps,
2nd Division, 3rd Corps, Army of Potomac





















